

A photograph of a snowy forest scene. The background shows a dense forest of evergreen trees covered in snow. In the foreground, there are several bare, dark trees with intricate branch structures. The ground is covered in a layer of snow, and the overall atmosphere is misty and wintry. The text is overlaid on the upper portion of the image.

Overview of work completed May 4 - 15 2026

- Working the berms for new Cells 1 and 2
- Worked on shaping the inside of Cells 1 and 2
- Started Lowering the air line that does not have adequate cover
- Started installing the recycle line

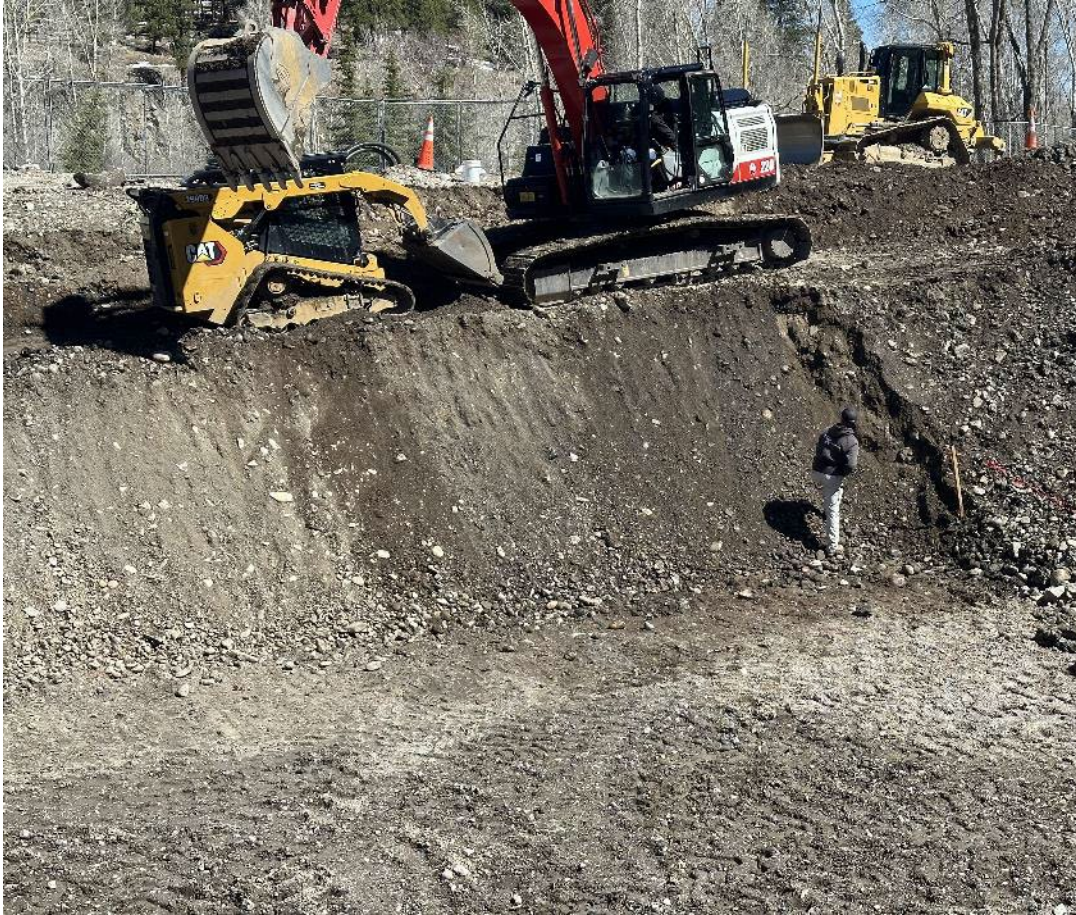
Continued Berm Construction



More Layout & Shaping



Shaping the pond interiors



Had a weather day



Added a section of berm where it was not wide enough



Storm followed by warm weather caused ground water table to rise into the new cells



Lowering the Air Line that was installed too shallow





Upcoming Work for the Week Ahead

- Continue working to lower air line
- Continue to install recycle line
- Finish the building shell punchlist
- Install electrical conduit to the cells
- Begin process piping installation

