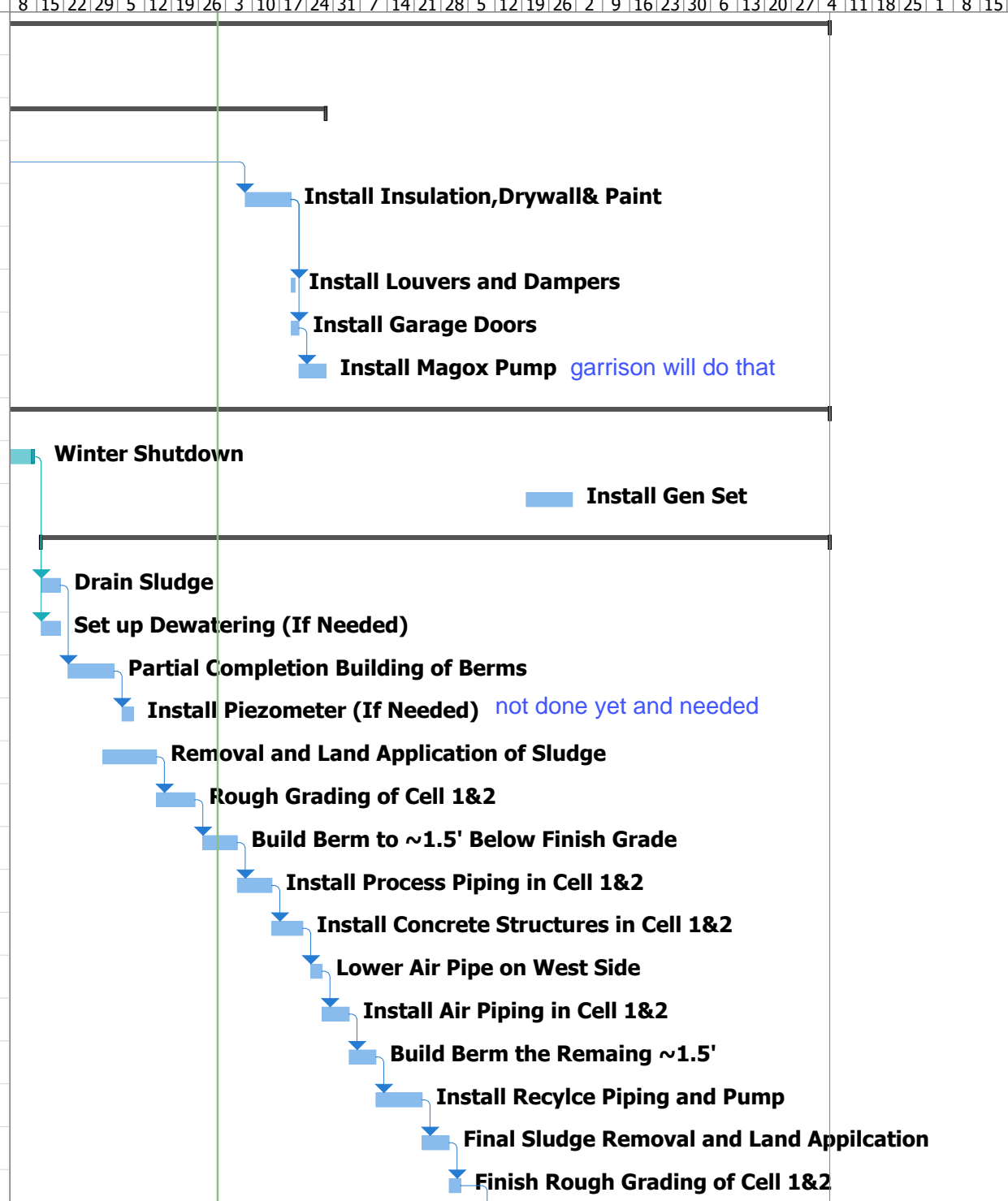


Lake City WWTP

ID	Task Mode	Task Name	Duration	Start	Finish	Timeline											
						Mar '26	Apr '26	May '26	Jun '26	Jul '26	Aug '26	Sep '26	Oct '26	Nov '26			
1	➔	Lake City WWTP	370 days	Thu 5/1/25	Tue 10/6/26	[Timeline bar from 5/1/25 to 10/6/26]											
2	➔	Phase 2 - Construct Cell 3 & New Building	15 days	Thu 5/1/25	Wed 5/21/25	[Timeline bar from 5/1/25 to 5/21/25]											
3	➔	Blower Building	279 days	Tue 5/6/25	Thu 5/28/26	[Timeline bar from 5/6/25 to 5/28/26]											
4	➔	Finish Solor Tubes and Roof Testing	2 days	Tue 5/6/25	Wed 5/7/25	[Timeline bar from 5/6/25 to 5/7/25]											
5	➔	Install Insulation, Drywall & Paint	8 days	Fri 5/8/26	Tue 5/19/26	[Timeline bar from 5/8/26 to 5/19/26]											
6	➔	Install Gutters/Snow Rail	4 days	Thu 5/8/25	Tue 5/13/25	[Timeline bar from 5/8/25 to 5/13/25]											
7	➔	Install Louvers and Dampers	1 day	Wed 5/20/26	Wed 5/20/26	[Timeline bar from 5/20/26 to 5/20/26]											
8	➔	Install Garage Doors	2 days	Wed 5/20/26	Thu 5/21/26	[Timeline bar from 5/20/26 to 5/21/26]											
9	➔	Install Magox Pump	5 days	Fri 5/22/26	Thu 5/28/26	[Timeline bar from 5/22/26 to 5/28/26]											
10	➔	Phase 3 - Construct Cell 1 & Cell 2	228 days	Fri 11/14/25	Tue 10/6/26	[Timeline bar from 11/14/25 to 10/6/26]											
11	🌟	Winter Shutdown	86 days	Fri 11/14/25	Fri 3/13/26	[Timeline bar from 11/14/25 to 3/13/26]											
12	➔	Install Gen Set	10 days	Mon 7/20/26	Fri 7/31/26	[Timeline bar from 7/20/26 to 7/31/26]											
13	➔	Cell 1/2 Construction	142 days	Mon 3/16/26	Tue 10/6/26	[Timeline bar from 3/16/26 to 10/6/26]											
14	➔	Drain Sludge	5 days	Mon 3/16/26	Fri 3/20/26	[Timeline bar from 3/16/26 to 3/20/26]											
15	➔	Set up Dewatering (If Needed)	5 days	Mon 3/16/26	Fri 3/20/26	[Timeline bar from 3/16/26 to 3/20/26]											
16	➔	Partial Completion Building of Berms	10 days	Mon 3/23/26	Fri 4/3/26	[Timeline bar from 3/23/26 to 4/3/26]											
17	➔	Install Piezometer (If Needed)	3 days	Mon 4/6/26	Wed 4/8/26	[Timeline bar from 4/6/26 to 4/8/26]											
18	➔	Removal and Land Application of Sludge	10 days	Wed 4/1/26	Tue 4/14/26	[Timeline bar from 4/1/26 to 4/14/26]											
19	➔	Rough Grading of Cell 1&2	8 days	Wed 4/15/26	Fri 4/24/26	[Timeline bar from 4/15/26 to 4/24/26]											
20	➔	Build Berm to ~1.5' Below Finish Grade	7 days	Mon 4/27/26	Tue 5/5/26	[Timeline bar from 4/27/26 to 5/5/26]											
21	➔	Install Process Piping in Cell 1&2	7 days	Wed 5/6/26	Thu 5/14/26	[Timeline bar from 5/6/26 to 5/14/26]											
22	➔	Install Concrete Structures in Cell 1&2	6 days	Fri 5/15/26	Fri 5/22/26	[Timeline bar from 5/15/26 to 5/22/26]											
23	➔	Lower Air Pipe on West Side	3 days	Mon 5/25/26	Wed 5/27/26	[Timeline bar from 5/25/26 to 5/27/26]											
24	➔	Install Air Piping in Cell 1&2	5 days	Thu 5/28/26	Wed 6/3/26	[Timeline bar from 5/28/26 to 6/3/26]											
25	➔	Build Berm the Remaing ~1.5'	5 days	Thu 6/4/26	Wed 6/10/26	[Timeline bar from 6/4/26 to 6/10/26]											
26	➔	Install Recylce Piping and Pump	8 days	Thu 6/11/26	Mon 6/22/26	[Timeline bar from 6/11/26 to 6/22/26]											
27	➔	Final Sludge Removal and Land Appilcation	5 days	Tue 6/23/26	Mon 6/29/26	[Timeline bar from 6/23/26 to 6/29/26]											
28	➔	Finish Rough Grading of Cell 1&2	3 days	Tue 6/30/26	Thu 7/2/26	[Timeline bar from 6/30/26 to 7/2/26]											

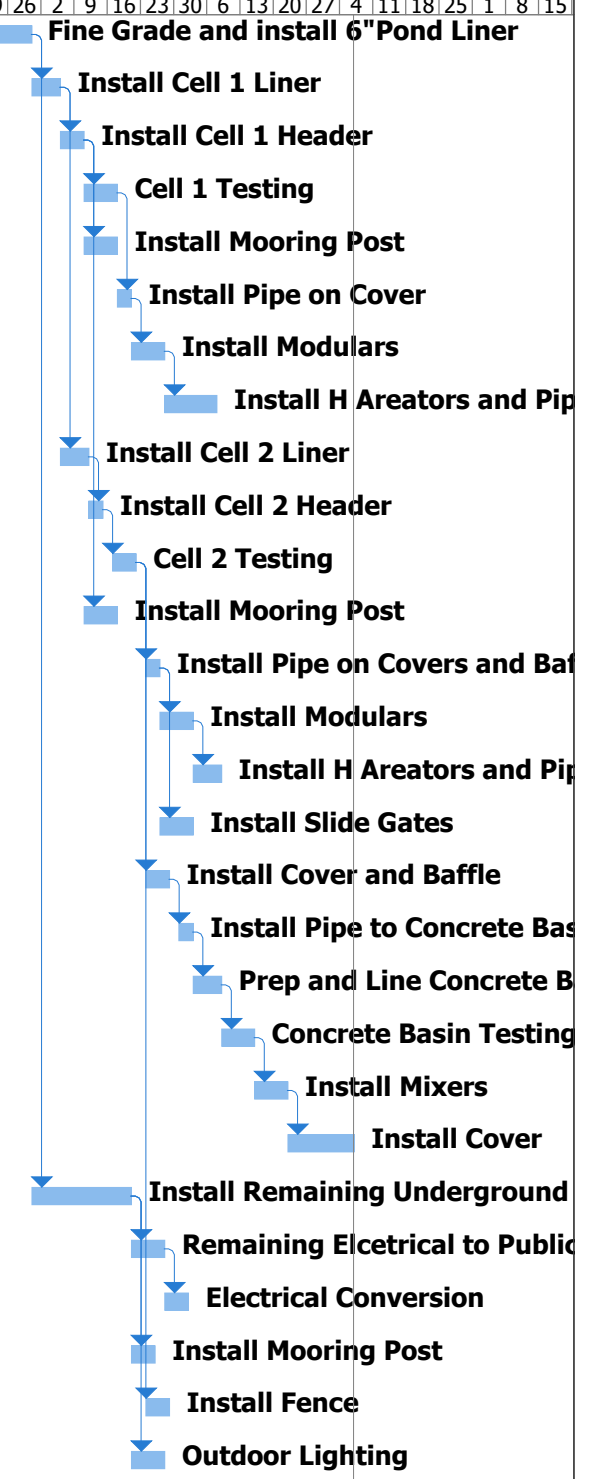


Project: Lake City WWTP - 5.1.2
Date: Fri 5/1/26

Task		Project Summary		Manual Task		Start-only		Deadline	
Split		Inactive Task		Duration-only		Finish-only		Progress	
Milestone		Inactive Milestone		Manual Summary Rollup		External Tasks		Manual Progress	
Summary		Inactive Summary		Manual Summary		External Milestone			

Lake City Grand Teton National Park

ID	Task Mode	Task Name	Duration	Start	Finish	Jul '26	Aug '26	Sep '26	Oct '26	Nov '26
29	➔	Fine Grade and install 6" Pond Liner	15 days	Fri 7/10/26	Thu 7/30/26					
30	➔	Install Cell 1 Liner	4 days	Fri 7/31/26	Wed 8/5/26					
31	➔	Install Cell 1 Header	3 days	Thu 8/6/26	Mon 8/10/26					
32	➔	Cell 1 Testing	5 days	Tue 8/11/26	Mon 8/17/26					
33	➔	Install Mooring Post	5 days	Tue 8/11/26	Mon 8/17/26					
34	➔	Install Pipe on Cover	3 days	Tue 8/18/26	Thu 8/20/26					
35	➔	Install Modulars	5 days	Fri 8/21/26	Thu 8/27/26					
36	➔	Install H Areators and Piping	7 days	Fri 8/28/26	Mon 9/7/26					
37	➔	Install Cell 2 Liner	4 days	Thu 8/6/26	Tue 8/11/26					
38	➔	Install Cell 2 Header	3 days	Wed 8/12/26	Fri 8/14/26					
39	➔	Cell 2 Testing	5 days	Mon 8/17/26	Fri 8/21/26					
40	➔	Install Mooring Post	5 days	Tue 8/11/26	Mon 8/17/26					
41	➔	Install Pipe on Covers and Baffle	3 days	Mon 8/24/26	Wed 8/26/26					
42	➔	Install Modulars	5 days	Thu 8/27/26	Wed 9/2/26					
43	➔	Install H Areators and Piping	4 days	Thu 9/3/26	Tue 9/8/26					
44	➔	Install Slide Gates <i>will require partially draining the cells after testing</i>	5 days	Thu 8/27/26	Wed 9/2/26					
45	➔	Install Cover and Baffle	5 days	Mon 8/24/26	Fri 8/28/26					
46	➔	Install Pipe to Concrete Basin	3 days	Mon 8/31/26	Wed 9/2/26					
47	➔	Prep and Line Concrete Basin	4 days	Thu 9/3/26	Tue 9/8/26					
48	➔	Concrete Basin Testing	5 days	Wed 9/9/26	Tue 9/15/26					
49	➔	Install Mixers	5 days	Wed 9/16/26	Tue 9/22/26					
50	➔	Install Cover <i>now proposing working into October</i>	10 days	Wed 9/23/26	Tue 10/6/26					
51	➔	Install Remaining Underground Power to Building/Signal Conduits	15 days	Fri 7/31/26	Thu 8/20/26					
52	➔	Remaining Elcetrical to Public Works Shop	5 days	Fri 8/21/26	Thu 8/27/26					
53	➔	Electrical Conversion	3 days	Fri 8/28/26	Tue 9/1/26					
54	➔	Install Mooring Post	3 days	Fri 8/21/26	Tue 8/25/26					
55	➔	Install Fence	5 days	Mon 8/24/26	Fri 8/28/26					
56	➔	Outdoor Lighting	5 days	Fri 8/21/26	Thu 8/27/26					



Project: Lake City WWTP - 5.1.2
Date: Fri 5/1/26

Task		Project Summary		Manual Task		Start-only		Deadline	
Split		Inactive Task		Duration-only		Finish-only		Progress	
Milestone		Inactive Milestone		Manual Summary Rollup		External Tasks		Manual Progress	
Summary		Inactive Summary		Manual Summary		External Milestone			